

• Cometic Gaskets advanced engineering and manufacturing process allows us to manufacture gaskets to fit your specific needs regardless of the material, application or quantity.

Our state of the art process requires no tooling.

We can change bore size, intake and exhaust port size and shapes.

• The key to manufacturing gaskets is to know the environment the gasket must endure and our engineering staff will assist you in choosing the gasket and material to fit your needs.

• It's easy to see with all the different gasket materials and available thicknesses why Cometic has become the leader in Custom Gasket manufacturing for your Harley.

• If you do not see it in our catalog give us a call and we will assist you with your Stock or Custom Gasket needs from Top Fuel to Top Street Performance!

## GASKET MATERIALS



### • **MLS™** (Multi-Layer Steel Head Gaskets)

Ideal for both aluminum heads to cast iron blocks and aluminum heads to aluminum blocks. Two viton coated outer embossed spring steel layers with a steel inner layer that provides support to the gasket allowing multiple thickness. Withstands the shearing forces created by aluminum heads on cast iron blocks. Retains torque (once the gasket takes a torqueset, re-torquing is not required).

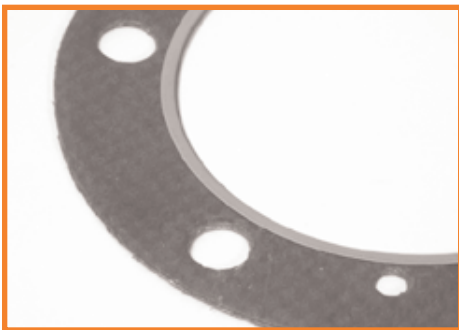
Available thickness: .027", .030", .036", .040", .045", .051", .054", .060", .065", .074", .120"



### • **AFM**

Is the ideal gasket material for machined surfaces, especially when used between two uneven stamped surfaces that have been plated. AFM is a chemically blown, compounded nitrile synthetic rubber bonded to an aluminum core with temperature resistance of over 2500 F. AFM material has an 85% recovery while maintaining a strong torque retention. AFM does not require gasket sealers or silicone bead. Re-torque is NOT required.

Available thickness: .018", .032", .045", .060"



### • **CFM-20**

A perforated steel core with an elastomer surface is ideal for head gaskets allowing heat to be drawn evenly across the gasket surface while providing maximum sealing characteristics when exposed to coolants and oils.

Available thickness: .043", .051", .059"



### • **Spring Steel**

A stainless steel core with a .001" thick coating of viton rubber on both sides.

Available thickness: .010", .014", .020"

Cometic Part #-C9888 Complete Primary Kit FLT, FLHT, FXR 94-UP  
Cometic Part #-C9889 Complete Primary Kit FLT, FLHT, FXR 80-93

Cometic Part #-C9261  
Starter Shaft Seal 94-UP  
All B/T Models  
Replaces: 12066  
Cometic Part #-C9379  
Starter Shaft Seal 89-93  
All B/T Models  
Replaces: 12053

Cometic Part #-C9441  
Inner Primary to Motor  
Case O-Ring  
All Models L82-99  
Replaces: 11147  
Cometic Part #-C9536  
Inner Primary to Motor  
Case O-Ring  
All Models 70-E82  
Replaces: 11125

Cometic Part #-C9307F1  
FLT, FXR B/T Primary  
94-UP  
Replaces: 34901-94A  
Cometic Part #-C9308F1  
FLT, FXR B/T Primary  
80-93  
Replaces: 34901-79A

Cometic Part #-C9305F1  
FLT, FXR Inspection Cover 85-UP  
Replaces: 34906-85A  
Cometic Part #-C9303F1  
FLT, FXR Inspection Cover 80-84  
Replaces: 34906-79A

Cometic Part #-C9260  
Wet Clutch Oil Seal All Models L84-UP  
Replaces: 12052  
Cometic Part #-C9518  
Wet Clutch Oil Seal All Models 70-E84  
Replaces: 12052

Cometic Part #-C9662  
Derby Cover O-Ring  
All Big Twin Models  
99-UP  
Replaces: 25416-99

Cometic Part #-C9442  
Derby Cover O-Ring  
All Big Twin Models  
L84-98  
Replaces: 25416-84  
Cometic Part #-C9997F1  
Derby Cover Gasket  
Replaces O-Ring  
All Big Twin Models  
99-UP  
Replaces: 25416-99C

Cometic Part #-C9309F1  
Primary Gasket Softail, Dyna 89-UP  
Replaces: 60539-89  
Cometic Part #-C9307F1  
Primary Gasket Softail, Superglide 65-88  
All Four Speeds  
Replaces: 60538-81C  
Cometic Part #-C9885  
94-UP FXST, FXD Primary Kit  
Cometic Part #-C9886  
89-93 FXST, FXD Primary Kit  
Cometic Part #-C9887  
65-88 FXST, FX, FL 4-Speed Primary Kit

Cometic Part #-C9261  
Starter Shaft Seal 94-UP All B/T Models  
Replaces: 12066  
Cometic Part #-C9379  
Starter Shaft Seal 89-93 All B/T Models  
Replaces: 12053

Cometic Part #-C9260  
Wet Clutch Oil Seal All Models L84-UP  
Replaces: 12052  
Cometic Part #-C9518  
Wet Clutch Oil Seal All Models 70-E84  
Replaces: 12052

Cometic Part #-C9441  
Inner Primary to  
Motor Case O-Ring All  
Models L82-99  
Replaces: 11147  
Cometic Part #-C9536  
Inner Primary to  
Motor Case O-Ring All  
Models 70-E82  
Replaces: 11125

Cometic Part #-C9942F1  
Primary Spacer Gasket "Pair"  
Softail 95-UP

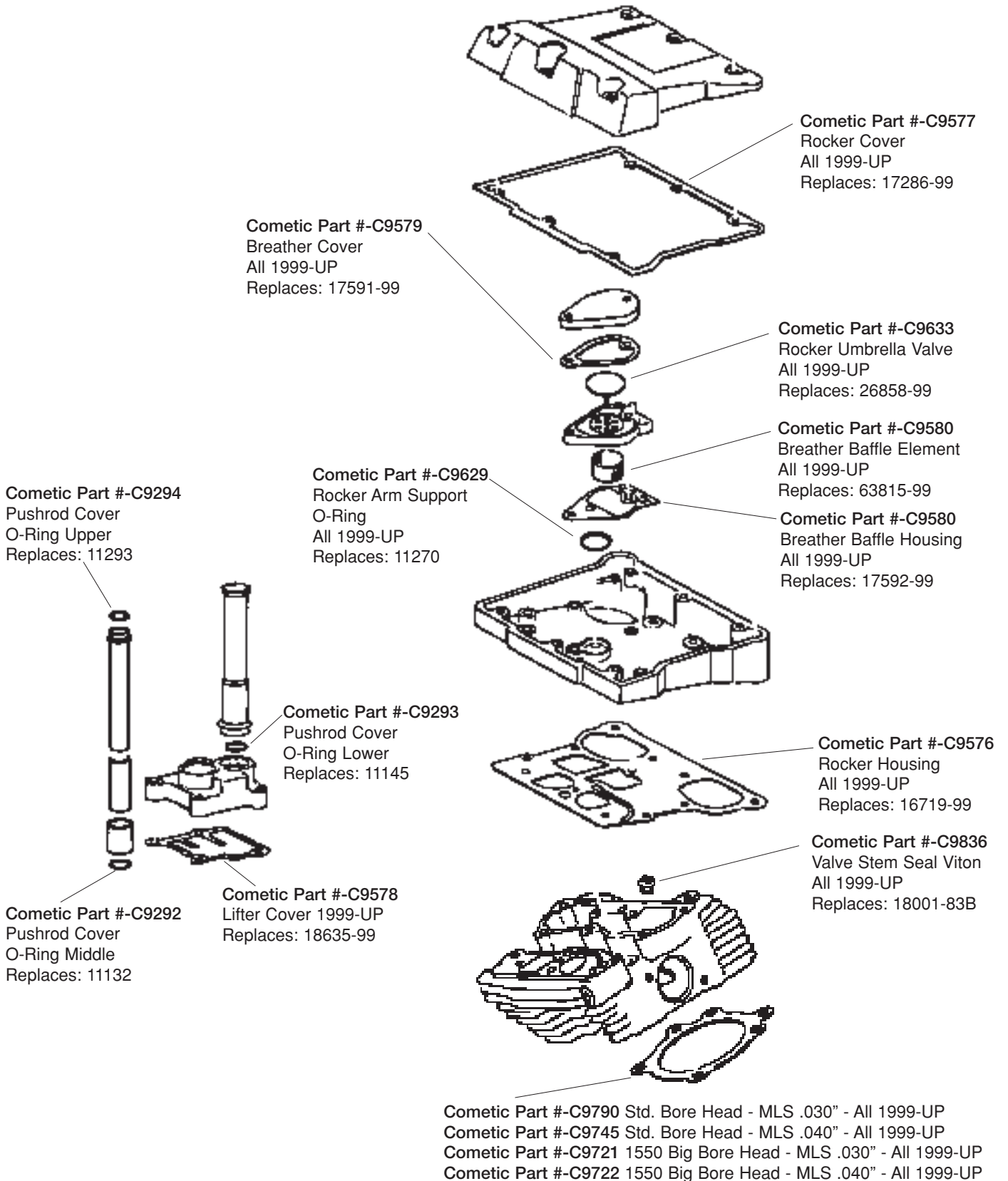
Cometic Part #-C9338F1  
Derby Cover Gasket  
All 4 Speed Models 70-83  
Replaces: 25416-70  
Cometic Part #-C9662  
Derby Cover O-Ring  
All Big Twin Models  
99-UP  
Replaces: 25416-99  
Cometic Part #-C9442  
Derby Cover O-Ring  
All Big Twin Models  
L84-98  
Replaces: 25416-84  
Cometic Part #-C9997F1  
Derby Cover Gasket  
Replaces O-Ring  
All Big Twin Models  
99-UP  
Replaces: 25416-99C

Cometic Part #-C9331F1 Inspection Cover Gasket  
Dyna & Softail, 4 & 5 Speed 65-UP

Illustrations courtesy:

**Clymer® Publications** Clymer.com

### Twin Cam®





### Evo Big Twin®

Cometic Part #-C9459  
Pushrod O-Ring  
Middle 1984-99  
Replaces: 11132

Cometic Part #-C9481  
Umbrella Valve Seal  
1993-99  
Replaces: 26856-89

Cometic Part #-C9286  
Rocker Cover Washer  
1984-99  
Replaces: 63858-49

Cometic Part #-C9293  
Pushrod O-Ring  
Lower 1984-99  
Replaces: 11145

Cometic Part #-C9292  
Pushrod O-Ring  
Upper 1984-99  
Replaces: 11157

Cometic Part #-C9278  
Upper Rocker Cover  
1992-99  
Replaces: 17356-92

Cometic Part #-C9297  
Rear Tappet Block  
Replaces: 18633-48D  
Cometic Part #-C9298  
Front Tappet Block  
Replaces: 18634-48C

Cometic Part #-C9282  
Lower Rocker Cover  
1992-99  
Replaces: 17355-92

Cometic Part #-C9283  
Inner Rocker Cover  
1984-99  
Replaces: 17358-84A

Cometic Part #-C9328  
Cam Cover 1993-99  
Replaces: 25225-93  
Cometic Part #-C9302  
Cam Cover 1984-92  
Replaces: 25225-70B

Cometic Part #-C9435  
Check Valve & Check Ball Cap O-Ring,  
All Big Twins Replaces: 11105

Cometic Part #-C9865  
One Piece Rocker Base  
1984-99  
Replaces: 16778-97X &  
16779-97X

Cometic Part #-C9384  
Oil Pump Cover 1992-99  
Replaces: 26276-92  
Cometic Part #-C9382  
Oil Pump Cover 1984-91  
Replaces: 26276-80A

Cometic Part #-C9350  
Cam Seal 1984-99  
Replaces: 83162-51DL

Cometic Part #-C9836  
Valve Stem Seal  
1984-99  
Replaces: 18001-83A

Cometic Part #-C9349  
Oil Pump Drive Gear Seal, 1984-99  
Replaces: 26227-58

Cometic Part #-C9383  
Oil Pump Body 1992-99  
Replaces: 26273-92  
Cometic Part #-C9381  
Oil Pump Body 1984-91  
Replaces: 26273-80B

Cometic Part #-C9290  
Intake Manifold Seal  
1990-99  
Replaces: 26995-86A

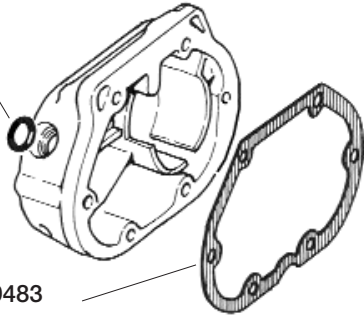
Cometic Part #-C9684  
Oil Pump Lower Cover O-Ring All Big Twins, 1992-98  
Replaces: 11241

Cometic Part #-C9719  
Race Style Exhaust  
1984-99 "Flat"  
Replaces: 65424-83  
Cometic Part #-C9288  
Std. Exhaust "Tapered"  
Replaces: 65324-83A

Cometic Part #-C9689 Std. Bore Head - MLS .030" - 1984-99  
Cometic Part #-C9688 Std. Bore Head - MLS .040" - 1984-99

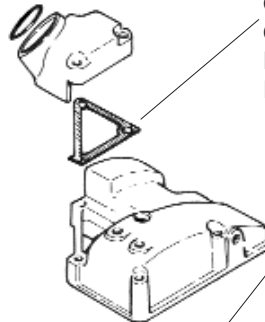
### Complete Transmission Kits & Individual Gaskets

Cometic Part #-C9459  
Trans/Clutch Oil Dipstick  
O-Ring, All Big Twin  
Replaces: 11132



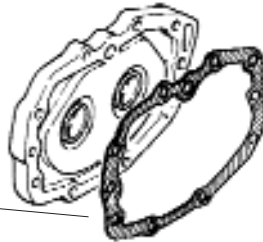
Cometic Part #-C9483  
Clutch Release Cover  
All Big Twin 88-UP  
Replaces: 36801-87B

Cometic Part #-C9460  
Oil Dipstick O-Ring  
Dyna 91-UP  
Replaces: 62673-90



Cometic Part #-C94891F5  
Oil Tank Spout  
Dyna 91-UP  
Replaces: 62423-90

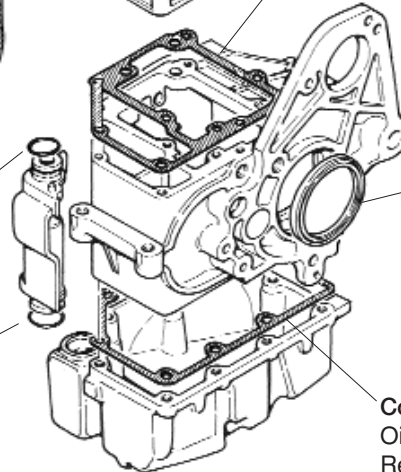
Cometic Part #-C9488  
Trans Top Cover  
Dyna 91-98  
Replaces: 34917-90A



Cometic Part #-C9264  
Trans Bearing Cover  
All Big Twin 86-98  
Replaces: 35652-79B  
Cometic Part #-C9644  
Trans Bearing Cover  
All Big Twin 99-UP  
Replaces: 35653-98

Cometic Part #-C9459  
Oil Tank Filler Cap O-Ring  
Top, Dyna 91-98  
Replaces: 36801-87B

Cometic Part #-C9845  
Oil Tank Filler Cap O-Ring  
Bottom, Dyna 91-98  
Replaces: 62672-90



Cometic Part #-C9262  
Trans Main Drive Seal  
Big Twin L94-UP  
Replaces: 12067A

Cometic Part #-C9646  
Oil Pan, Dyna 99-UP  
Replaces: 26072-99  
Cometic Part #-C9490  
Oil Pan, Dyna 91-98  
Replaces: 26072-90A

Cometic Part #	OEM Part #	Description	Pkg. Qty.	Price
----------------	------------	-------------	-----------	-------

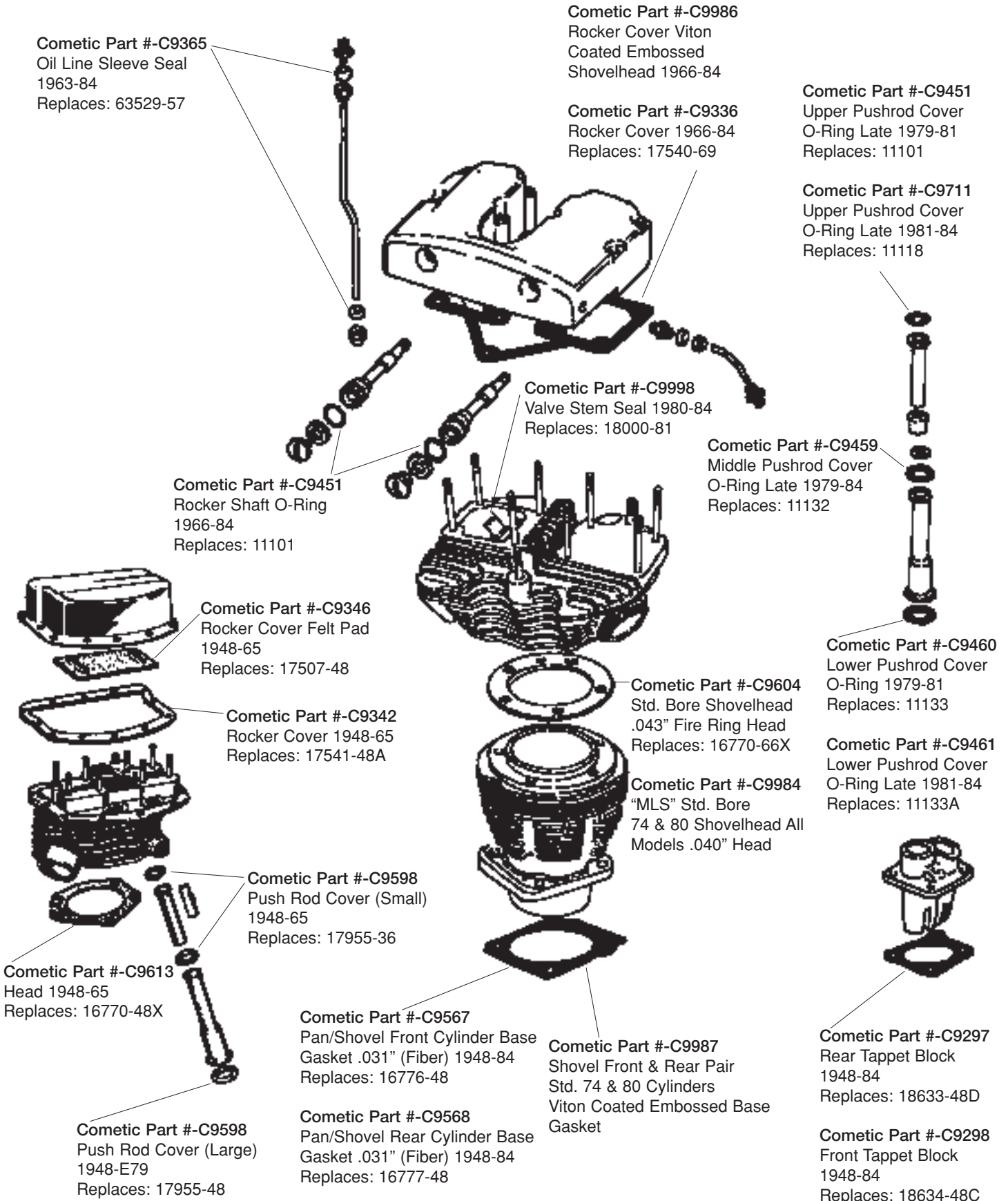
### 1936-UP BIG TWIN EVO / TWIN CAM INDIVIDUAL REPLACEMENT GASKETS,SEALS, O-RINGS

#### •Complete Transmission Kits

C9464	33031-70	E70-E 79 Big Twin		\$23.98 (D9341)
C9465	33031-80	L79-82 Big Twin 4 Speed		\$23.98 (D9341))
C9466	33031-82	80-E84 Big Twin 5 Speed		\$26.74 (D4061))
C9467	33031-85	L84-92 Big Twin Except Dyna 5 Speeds		\$45.28 (D7172)
C9468	33031-91	91-99 Dyna & FXDB-S Evolution Models		\$25.78 (D6451)
C9469	33031-93	93-99 FLT,FLH, FXR, Dyna & Softails Evolution Models		\$25.78 (D6451)
C9639	26072-99	99-UP FLT, FLH, Softail 00-UP, Twin Cam Models		\$28.36 (D2071)
C9640	26072-99	99-UP Dyna Twin Cam Models		\$28.36 (D2071)

(Kit contains all of the necessary gaskets, seals, o-rings, end cover, top cover gaskets and all washers needed to completely rebuild the transmission)

### Shovelhead & Panhead®



### Evolution Sportster®

Cometic Part #-C9294  
Pushrod Tube O-Ring  
Upper 1991-03  
Replaces: 11190

Cometic Part #-C9481  
Umbrella Valve Seal  
1991-03  
Replaces: 26856-89

Cometic Part #-C9286  
Rocker Cover Washer  
1987-03  
Replaces: 63858-49

Cometic Part #-C9276  
Upper Rocker Box  
1991-03  
Replaces: 17354-89

Cometic Part #-C9276  
Lower Rocker Box  
1991-04  
Replaces: 17353-89A

Cometic Part #-C9283  
Center Rocker Box  
Replaces: 17358-84A

Cometic Part #-C9295  
Pushrod Tube O-Ring  
Lower 1991-03  
Replaces: 17944-89

Cometic Part #-C9296  
Anti Rotation Pin O-Ring  
1991-03  
Replaces: 11176

Cometic Part #-C9865  
One Piece Rocker Base  
1986-04  
Replaces: 16778-97X &  
16779-97X

Cometic Part #-C9355  
Cam Seal 1986-03  
Replaces: 11124-DL

Cometic Part #-C9836  
Viton Valve Stem Seal  
1986-02  
Replaces: 18001-83A

Cometic Part #-C9944F1  
Cam Cover 2004-UP  
Replaces: 25263-90D AFM  
Cometic Part #-C9313F1  
Cam Cover 1991-03  
Replaces: 25263-90B AFM  
Cometic Part #-C9311F1  
Cam Cover 1986-90  
Replaces: 25263-86 AFM

Cometic Part #-C9719  
Race Style Exhaust  
Replaces: 65324-83

Cometic Part #-C9288  
Std. Exhaust  
Replaces: 65324-83

Cometic Part #-C9290  
Intake Manifold to  
Head Seal  
Replaces: 26995-86B

Cometic Part #-C9688  
Std. Bore Head .040" MLS  
1200 1986-04

Cometic Part #-C9689  
Std. Bore Head .030" MLS  
1200 1986-04



### Iron Sportster®

